

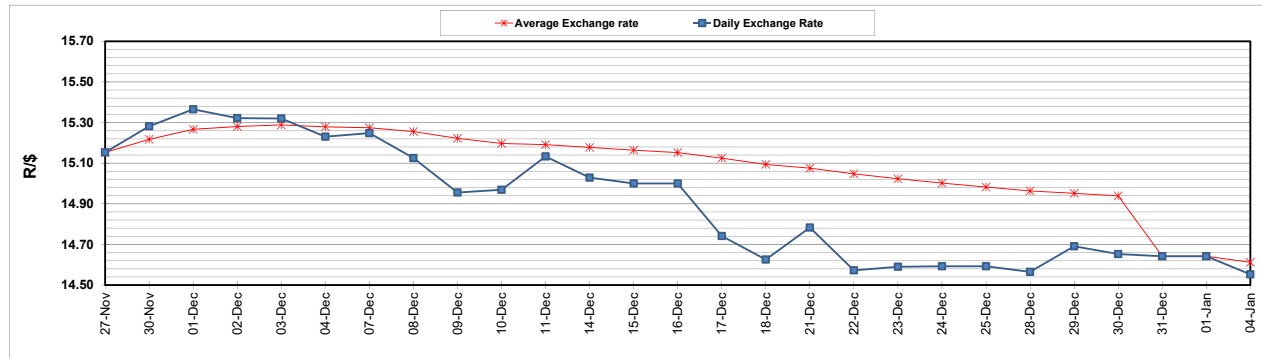
	PETROL 95 ULP	PETROL 93 ULP & LRP	DIESEL 0.05%	DIESEL 0.005%	ILL. PAR.
GAUTENG PUMP PRICE (SA c/l) AS FROM 06/01/2021	1,486.000	1,469.000	-	-	-
WHOLESALE PRICE (SA c/l) AS FROM 06/01/2021	-	-	1,300.420	1,301.820	739.688
SINGLE NATIONAL MAXIMUM RETAIL PRICE	-	-	-	-	930.000
BASIC FUEL PRICE - 04/01/2021 (SA c/l)	544.591	539.560	552.577	554.764	538.471
PRESS RELEASE CONTRIBUTION TO BFP 31/12/2020 - 04/01/2021 (SA c/l)	479.170	469.170	486.630	489.030	472.128
UNIT OVER/(UNDER) RECOVERY - 04/01/2021 (SA c/l)	(65.421)	(70.390)	(65.947)	(65.734)	(66.343)
AVERAGE BASIC FUEL PRICE 31/12/2020 - 04/01/2021	542.065	536.491	548.824	551.156	535.140
AVERAGE UNIT OVER/(UNDER) RECOVERY 31/12/2020 - 04/01/2021	(62.895)	(67.321)	(62.194)	(62.126)	(63.012)

### ANALYSIS MOVEMENT OF AVERAGE OVER/(UNDER) RECOVERY

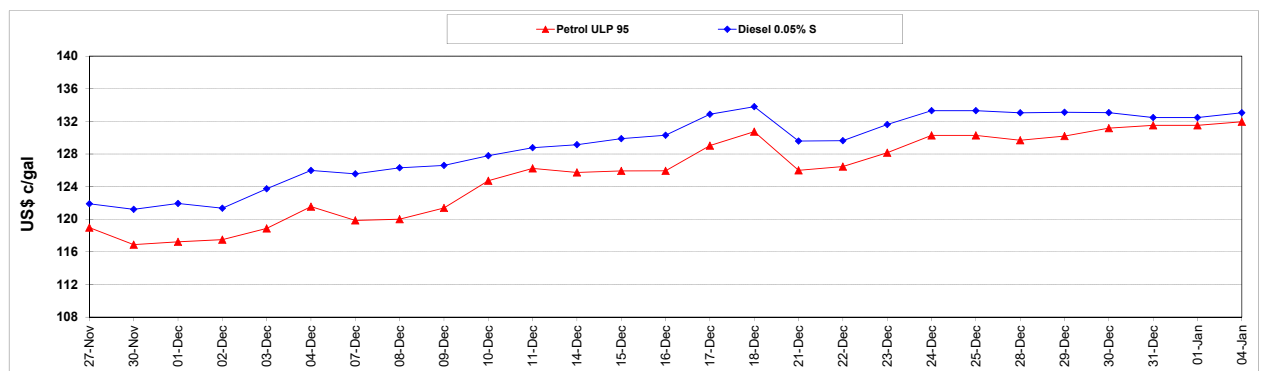
	PETROL 95	PETROL 93	DIESEL 0.05%	DIESEL 0.005%	ILL. PAR.
- MOVEMENT IN INTERNATIONAL PRODUCT PRICES	(75.030)	(79.331)	(74.480)	(74.464)	(74.991)
- MOVEMENT IN EXCHANGE RATE	12.135	12.010	12.286	12.338	11.979
AVERAGE UNIT OVER/(UNDER) RECOVERY 31/12/2020 - 04/01/2021	(62.895)	(67.321)	(62.194)	(62.126)	(63.012)

**R/\$ EXCHANGE RATE - (R/\$14.5525 - 04/01/2021)**

### EXCHANGE RATE USED IN BASIC FUEL PRICE



### INTERNATIONAL PRODUCT PRICES OF BASKET USED IN BASIC FUEL PRICE



### BASIC FUEL PRICE IN SA CENTS PER LITRE

